

Plate nosepieces (for riveting soft and fragile materials)

Plate nosepiece P without cut-out

| Rivet Ø | Rivet material | Ø d | Designation | SN 2, HN 2, PH 1, PH 2, PH 2-KA, PH-Axial, PH 2000 | | TAURUS® AccuBird® PowerBird® | |
|-----------|---|------|----------------|--|----------------|------------------------------------|--|
| | | | | Article no. Dome head | Designation | Article no. | |
| 3 and 3,2 | Al, Cu, Steel, Stainless steel, Stinox, Al/Al, PG Al, PG steel | 2.4 | P 16/24 | 145 6649 | P 17/24 | 145 7335 | |
| 4 | Al, Cu, CAP® Al, CAP® Cu | 2.4 | P 16/24 | 145 6649 | P 17/24 | 145 7335 | |
| 4 | Steel, Al/Al, PG Al | 2.7 | P 16/27 | 145 6650 | P 17/27 | 145 7336 | |
| 4 | Stainless steel, Stinox, PG steel | 3.0 | P 16/29 | 145 6651 | P 17/29 | 145 7337 | |
| 4.8 and 5 | Al, CAP® Al, CAP® Cu, PG Al | 3.0 | P 16/29 | 145 6651 | P 17/29 | 145 7337 | |
| 4.8 and 5 | Steel, Al/Al | 3.35 | P 16/32 | 145 6657 | P 17/32 | 145 7338 | |
| 4.8 and 5 | Stainless steel, Stinox, PG steel | 3.6 | P 16/36 | 145 6656 | P 17/36 | 145 7339 | |
| 6 | Al | 3.6 | P 16/36 | 145 6656 | P 17/36 | 145 7339 | |

For countersunk head blind rivets

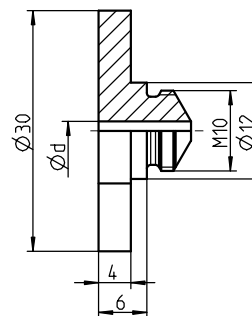
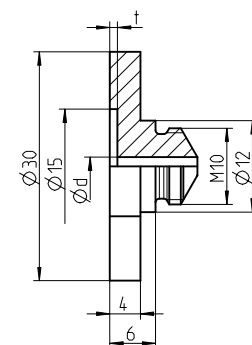


Plate nosepiece PA with cut-out

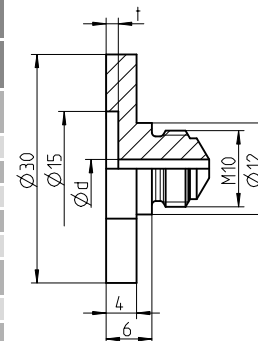
| Rivet Ø | Rivet material | Ø d | Designation | Depth t | SN 2, HN 2, PH 1, PH 2, PH 2-KA, PH-Axial, PH 2000 | | TAURUS® AccuBird® PowerBird® | |
|-----------|---|------|-------------------|------------|--|-------------------|------------------------------------|-------------|
| | | | | | Article no. Dome head | Designation | Depth t | Article no. |
| 3 and 3,2 | Al, Cu, Steel, Stainless steel, Stinox, Al/Al, PG Al, PG steel | 2,4 | PA 16/24 | 1.0 | 145 6659 | PA 17/24 | 1.0 | 145 7330 |
| 4 | Al, Cu, CAP® Al, CAP® Cu | 2.4 | PA 16/24 | 1.0 | 145 6659 | PA 17/24 | 1.0 | 145 7330 |
| 4 | Steel, Al/Al, PG Al | 2.7 | PA 16/27 | 1.0 | 145 6660 | PA 17/27 | 1.0 | 145 7331 |
| 4 | Stainless steel, Stinox, PG steel | 3.0 | PA 16/29 | 1.1 | 145 6661 | PA 17/29 | 1.1 | 145 7341 |
| 4.8 and 5 | Al, CAP® Al, CAP® Cu, PG Al | 3.0 | PA 16/29 | 1.1 | 145 6661 | PA 17/29 | 1.1 | 145 7341 |
| 5 | AHarge flange K 11 and K 14 | 3.0 | PA 16/29 K | 1.5 | 145 6652 | PA 17/29 K | 1.5 | 145 7332 |
| 4.8 and 5 | Steel, Al/Al | 3.35 | PA 16/32 | 1.1 | 145 6653 | PA 17/32 | 1.1 | 145 7333 |
| 4.8 and 5 | Stainless steel, Stinox, PG steel | 3.6 | PA 16/36 | 1.1 | 145 6662 | PA 17/36 | 1.1 | 145 7342 |
| 6 | Al | 3.6 | PA 16/36 | 1.3 | 145 6666 | PA 17/36 | 1.3 | 145 7334 |

For standard blind rivets (dome head)

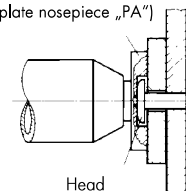


Pivot nosepieces PG for the production of articular rivet connections

| Rivet Ø | Rivet material | Ø d | Designation | Depth t | SN 2, HN 2, PH 1, PH 2, PH 2-KA, PH-Axial, PH 2000 | | TAURUS® AccuBird® PowerBird® | |
|-----------|---|------|-------------------|------------|--|---------------------|------------------------------------|-------------|
| | | | | | Article no. Dome head | Designation | Depth t | Article no. |
| 3 and 3,2 | Al, Cu, Steel, Stainless steel, Stinox, Al/Al, PG Al, PG steel | 2.4 | PG 16/24 | 1.6 | 145 6663 | PG 17/24 | 1.6 | 143 5002 |
| 4 | Al, Cu, CAP® Al, CAP® Cu | 2.4 | PG 16/24 | 1.6 | 145 6663 | PG 17/24 | 1.6 | 143 5002 |
| 4 | Steel, Al/Al, PG Al | 2.7 | PG 16/27 | 1.6 | 145 6664 | PG 17/27 | 1.6 | 143 5003 |
| 4 | Stainless steel, Stinox, PG steel | 3.0 | PG 16/29 | 1.6 | 145 6655 | PG 17/29 | 1.6 | 143 5007 |
| 4.8 and 5 | Al, CAP® Al, CAP® Cu, PG Al | 3.0 | PG 16/29 | 1.6 | 145 6655 | PG 17/29 | 1.6 | 143 5007 |
| 5 | AHarge flange K 11 and K 14 | 3.0 | PG 16/29 K | 2.0 | 145 6658 | PG 17/29 K | 2.0 | 143 5004 |
| 5 | AHarge flange K 16 | 3.0 | - | - | - | PG 17/29 K16 | 2.0 | 143 5009 |
| 4.8 and 5 | Steel, Al/Al | 3.35 | PG 16/32 | 1.6 | 145 6654 | PG 17/32 | 1.6 | 143 5005 |
| 4.8 and 5 | Stainless steel, Stinox, PG steel | 3.6 | PG 16/36 | 1.6 | 145 6665 | PG 17/36 | 1.6 | 143 5006 |
| 6 | Al | 3.6 | PG 16/36 | 2.0 | 146 4002 | PG 17/36 | 2.0 | 145 7340 |



Pivot nosepiece PG (dimensions compare plate nosepiece „PA“)



DELIVERY TIMES ON REQUEST!